



wired for access





wired for access

Lanka ja Muovi Oy brings you multi-functional systems, the latest production technology, and inventiveness. Our systems are designed for the modern home. The products are versatile, with strong emphasis on functionality and clever use of space.

We at Lanka ja Muovi Oy offer you creative space solutions for all your needs at home. You can organize and decorate your home at the same time. Enjoy your beautiful and functional home.

**Design your own space,
we offer the solutions
and make it happen.**

contents



1. kitchen

pp. 6 to 19

- Dish Drying Shelves
- Drip Trays
- Shelf Supports
- Waste Systems
- Waste Recycling Supplies
- Kitchen Racks and Shelves
- Pot and Supply Carts
- Corner Cabinets
- Stools and Chairs



2. bathroom

pp. 20 to 23

- Bathroom Baskets, Shelves, and Racks
- Laundry Baskets



3. storage systems

pp. 24 to 36

- Soft-closing Runner Systems
- Roller Runner Systems
- Sliding Baskets (Cabinet Baskets)
- Basket Racks
- Clothes Tubes & Supports
- Wall Storage System & Shelves
- Shoe Racks
- Baskets, Boxes & Poles for Doors, Walls or Shelves
- Hallway Hangers and Baskets
- Cleaning Cupboard



4. other products

pp. 37 to 38

- Other products
- Custom Made Products for Business Customers

5. coatings & materials

p. 39

Measures are in millimetres unless mentioned otherwise.



photo taken in the 1960s



photo taken in the 1950s



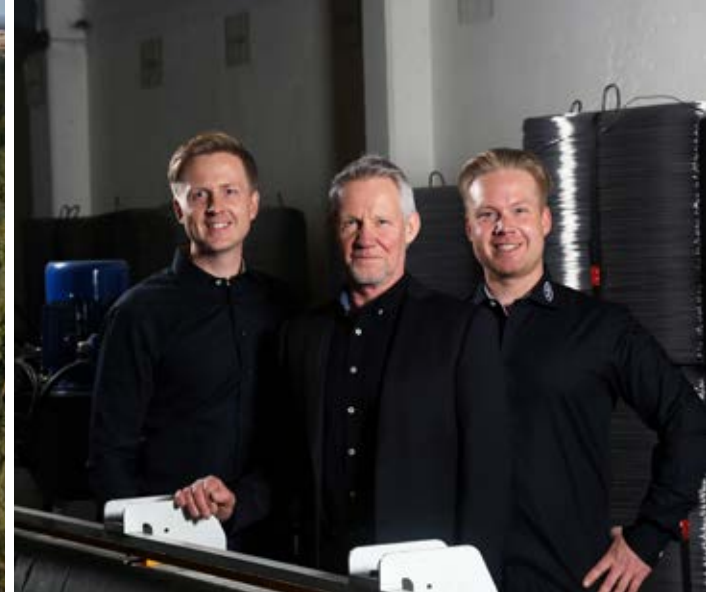
photo taken in the 1960s

inventive systems for over 60 years

The roots of our company reach into year 1955, when brothers Eino and Heikki Pohjanlehto were developing a whisk for cooking. Lanka ja Muovi Ky was founded for this purpose, and a small workshop was built in Pori, a town on the west coast of Finland.

While developing new products, surface treatment of products became a problem. Since no necessary technology was available in Finland, Eino set out to find a solution abroad. At the turn of 1956 to 1957, a suitable raw material was found

in Italy, and Eino received a small sample batch of polyethylene powder from the manufacturer. Coating test was performed in Pori, Kiertokatu, in a regular kitchen oven of an apartment house. A successful experiment lead in to sizable investment, and we were the first in Finland to introduce polyethylene plastic coating method on metal. This inspiration launched a strong growth for our company. Product lines quickly expanded to cover all home storage needs.



family business in third generation

Today, Lanka and Muovi Oy is among the leading manufacturers of plastic coated steel wire products in the Northern Europe. Our company employs approximately 50 persons, and the products are still manufactured in our original founding location in Pori. Eino's son Harri took over the lead of the company in late 1980s. Today, the company is lead in third generation by Harri's sons, Aki and Pasi Pohjanlehto.

During the company's long history, many things

have changed, but the fundamental idea remains the same as in the year of founding in 1955: high quality products and high customer satisfaction. We guarantee practical products of high quality and functionality for our customers in the future, by setting high standards for raw materials, by practicing continuous product development, by investing in employee skills, and by open-minded investment in new technology. We intend to continue trailblazing into the future.



systems for kitchen

The kitchen is heavily used, so its functionality becomes especially important. Designing a functional kitchen often requires a lot of effort. We have set out to make designing easier with the help of the small and easy ideas that our products offer you. We help you achieve a more functional kitchen by small changes.

Our handy kitchen solutions provide more space for the most demanding cook for creating delicious dinners. Cooking is quick,

as well as the sorting of the kitchen waste. The sensible utilization of space and ease of use of our storage solutions help you keep your kitchen in order and pretty. Our versatile systems put emphasis on functionality, practicality and high quality resulting from long-term work and know-how, which you can feel when holding a product in hand. These qualities will help you feel at home in your kitchen.

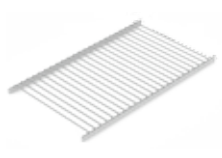


KITCHEN





dish drying shelves



FLAT SHELF

Depth: 260
Length: 363*, 463*, 563*, 663, 763*, 863, 963*, 1163

Steel wire. Wire spacing 19 mm. Support hole spacing 255 mm.

- 🏠 **LM 90VA** (polyethylene/white)
- 🏠 **LM 90AN** (polyethylene/anthracite*)
- 🏠 **LM 90EH** (epoxy/silver)



FLAT SELF, WITH ENDPLATE

Depth: 250
Length: 365, 465, 565, 765, 965

Steel wire. Wire spacing 19 mm.

- 🏠 **LM 90/2** (polyethylene/white)



PLATE SHELF

Depth: 260
Length: 363*, 463*, 563*, 663, 763*, 863, 963*, 1163

Steel wire. Wire spacing 17.5 mm. Support hole spacing 255 mm

- 🏠 **LM 91VA** (polyethylene/white)
- 🏠 **LM 91AN** (polyethylene/anthracite*)
- 🏠 **LM 91EH** (epoxy/silver)



PLATE SHELF, WITH END PLATE

Depth: 250
Length: 365, 465, 565, 765, 965

Steel wire. Wire spacing 17.5 mm.

- 🏠 **LM 91/2** (polyethylene/white)

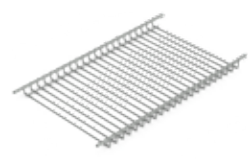


COMBINED SHELF

Depth: 265
Length: 363, 463, 563, 663, 763, 863, 963

Steel wire/ polyethylene. Wire spacing 17.5 mm. Suited for both plates and flat drying. Includes shelf support strips which are more easily installed with guide pegs. Supports PS.

- 🏠 **LM 93** (polyethylene/white)



FLAT SHELF

Depth: 262
Length: 363, 463, 563, 663, 763, 863, 963

Zinc+lacquer/steel wire. Support hole spacing 255 mm. Wire spacing 19 mm.

- 🏠 **LM 100** (gloss zinc)

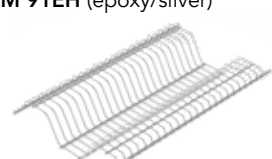
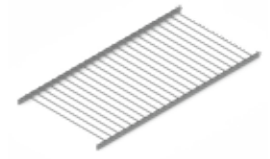


PLATE SHELF

Depth: 262
Length: 363, 463, 563, 663, 763, 863, 963

Zinc+lacquer/steel wire. Support hole spacing 255 mm. Wire spacing 17.5 mm.

- 🏠 **LM 101** (gloss zinc)



FLAT SHELF

Depth: 227
Length: 363, 463, 563, 663, 763, 863, 963.

Epoxy/steel wire. Wire spacing 19 mm. Support hole spacing 225 mm.

Recommended to be used with the support LM 99.

- 🏠 **LM 810** (epoxy/silver)

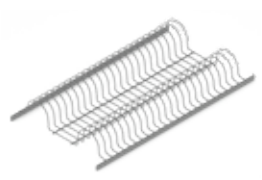


PLATE SHELF

Depth: 252
Length: 357, 457, 557, 657, 757, 857, 957.

Epoxy/steel wire. Wire spacing 17.5 mm. Support hole spacing 250 mm. Recommended to be used with the support LM 99.

- 🏠 **LM 806** (epoxy/silver)





DRYING SHELF WITH TRAY

Width: 505
Depth: 485
Height: 175

Shelf polyethylene/steel wire, draining tray aluminium. Suited for plates and level drying.

- 🏠 **LM 751** (silver, aluminium)

The dish drying shelves are treated with food-safe finish! We recommend polyethylene coating for drying dishes, because it is more flexible than other coating alternatives. When the coating is gentle and flexible, dishes stay better in their place and do not scratch. See info for coatings and materials, page 39.





drip trays



new



new



DRIP TRAY

- Depth:** 240
- Height:** 21
- Length:** 284 (M400)
384 (M500)
484 (M600)
584 (M700)
684 (M800)
784 (M900)
884 (M1000)

Food-safe PS. Fits underneath the LM dish drying shelf using a separate support. Can be installed in shelves LM 91, 91/2, 93, 100, 101, 806.

🏠 LM 28 (PS/white)

DRIP TRAY SUPPORTS

Epoxy/steel.
With supports, Drip Tray LM 28 can be installed in shelves LM 91, 91/2, and 101.

🏠 LM 20 (white)

DRIP TRAY SUPPORTS

Food-safe ABS. With supports, Drip Tray LM 28 can be installed in shelves LM 93, 100.

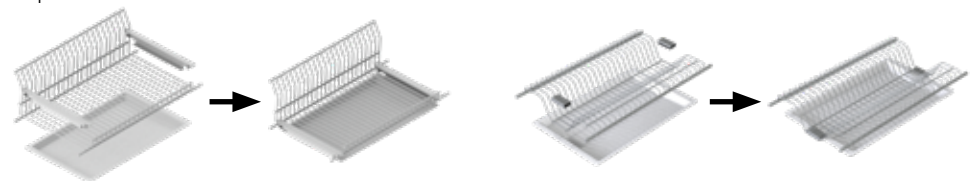
🏠 LM 29 (ABS/white)

DRIP TRAY SUPPORTS

Epoxy/steel
With supports, Drip Tray LM 28 can be installed in shelf LM 806.

🏠 LM 807 (silver)

Examples:



- The drip tray is installed in the lower part of the dish drying cabinet, this prevents water from dripping on to the draining board.
- The drip tray is easy to remove for cleaning
- The drip tray requires extra space under the dish drying shelves, as follows
 - 25 mm with LM 91, 91/2, 101
 - 37 mm with LM 93
 - 22 mm or 27 mm with LM 100 --> The flat shelf may be installed in the cabinet with edge folds up or down.
 - 32 mm with LM 806

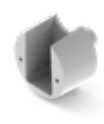
shelf supports



LM 35
🏠 White
🏠 Grey



LM 36
🏠 White
🏠 Grey



LM 37
🏠 White
🏠 Grey



LM 95
🏠 White



LM 96
🏠 White



LM 98
🏠 White



LM 99*
Width: 267
🏠 White
🏠 Grey
🏠 Anthracite

* LM 99 fits all dish drying shelves, except for LM 93. Shelf support strip's guide pegs make installing easier.





waste systems – basic pull-out bins

Basic pull-out bins for every home

- Intended to be placed behind hinged door, mounted to the cabinet floor plate. The advantage of bottom mounting is that the width of the cabinet is not the critical measurement.
- Waste carts are manufactured from robust steel wire, and they are finished with impact-proof epoxy.
- The runners move smoothly and last several years in normal use.
- Waste systems may also be installed two side by side.
- Waste systems with two depth measurements: first measurement is the depth of the bin frame, the second is the total depth.



PULL-OUT WASTE SYSTEM

Width: 258
Depth: 340/415
Height: 400
 For a small space. 2x bin (LM 518) 10L.

- 🏠 **LM 62/2** (white)
- 🏠 **LM 62/2** (anthracite)



PULL-OUT WASTE SYSTEM

Width: 330
Depth: 405/435
Height: 355
 1x bin (LM 533) 11L, and 1x bin (LM 531) 16L.

- 🏠 **LM 64/2** (anthracite)



PULL-OUT WASTE SYSTEM

Width: 330
Depth: 405/435
Height: 355
 1x bin (LM 533) 11L, and 2x bin (LM 530) 8L.

- 🏠 **LM 64/3** (anthracite)



PULL-OUT WASTE SYSTEM

Width: 290
Depth: 440
Height: 355
 2x bin (LM 520) 11.5L.

- 🏠 **LM 65/2** (white)
- 🏠 **LM 65/2** (anthracite)



PULL-OUT WASTE SYSTEM

Width: 290
Depth: 440
Height: 355
 2x bin (LM 518) 10L, 1x bio-bin (LM 516) 16L.

- 🏠 **LM 65/3** (white)
- 🏠 **LM 65/3** (anthracite)



PULL-OUT WASTE SYSTEM

Width: 290
Depth: 435/480
Height: 355
 2x bin (LM 520) 11.5L.

- 🏠 **LM 66/2** (white)
- 🏠 **LM 66/2** (anthracite)



PULL-OUT WASTE SYSTEM

Width: 260
Depth: 480
Height: 355
 1x bin (LM 530) 8L, and 1x bin (LM 531) 16L.

- 🏠 **LM 67/2** (anthracite)



PULL-OUT WASTE SYSTEM

Width: 260
Depth: 480
Height: 355
 3x bin (LM 530) 8L.

- 🏠 **LM 67/3** (anthracite)



PULL-OUT WASTE SYSTEM EXTRA NARROW

Width: 180
Depth: 545
Height: 345
 White with 2x bin (LM 518) 10L.
 Silver with 1x bin (LM 530) 8L, and 1x bin (LM 533) 11L.

- 🏠 **LM 72/2** (white)
- 🏠 **LM 72/2** (anthracite)



PULL-OUT WASTE SYSTEM

Width: 332
Depth: 480
Height: 355
 2x bin LM 531 16L.

- 🏠 **LM 79/2** (anthracite)



PULL-OUT WASTE SYSTEM

Width: 332
Depth: 480
Height: 355
 2x bin (LM 530) 8L, and 1x bin (LM 531), 16L.

- 🏠 **LM 79/3** (anthracite)



PULL-OUT WASTE SYSTEM

Width: 332
Depth: 480
Height: 355
 4x bin (LM 530) 8L.

- 🏠 **LM 79/4** (anthracite)

Accessories (pp. 13 to 14): Opening mechanism, various bin and lid options, pull-out top tray.

waste systems – heavy-duty systems

Heavy-duty door/bottom mounted waste systems



PULL-OUT WASTE SYSTEM

Width: 365
Depth: 475/505
Height: 320
 2x bin (LM 531) 16L.

🏠 **LM 77/2U** (anthracite)



PULL-OUT WASTE SYSTEM

Width: 365
Depth: 475/505
Height: 320
 2x bin (LM 530) 8L, and
 1x bin (LM 531), 16L.

🏠 **LM 77/3** (anthracite)



PULL-OUT WASTE SYSTEM

Width: 365
Depth: 475/505
Height: 320
 4x bin (LM 530), 8L.

🏠 **LM 77/4** (anthracite)



PULL-OUT WASTE SYSTEM

Width: 365
Depth: 280/405
Height: 320
 1x bin (LM 531), 16L.

🏠 **LM 78/1** (anthracite)



PULL-OUT WASTE SYSTEM

Width: 365
Depth: 280/405
Height: 320
 2x bin (LM 530) 8L.

🏠 **LM 78/2U** (anthracite)



PULL-OUT WASTE SYSTEM

Width: 535
Depth: 320/405
Height: 320
 2x bin (LM 531) 16L.

🏠 **LM 70/2** (anthracite)



PULL-OUT WASTE SYSTEM

Width: 535
Depth: 320/405
Height: 320
 2x bin (LM 530) 8L,
 and 1x bin (LM 531) 16L.

🏠 **LM 70/3** (anthracite)



PULL-OUT WASTE SYSTEM

Width: 535
Depth: 320/405
Height: 320
 4x bin (LM 530) 8L.

🏠 **LM 70/4** (anthracite)

new



PULL-OUT WASTE SYSTEM WITH DAMPENER

Width: 455
Depth: 320/420
Height: 305
 1x bin (LM 533) 11L, and
 1x bin (LM 531) 16L.
 Dampener integrated in the
 runners.

🏠 **LM 71/2H** (anthracite)

new



PULL-OUT WASTE SYSTEM WITH DAMPENER

Width: 455
Depth: 320/420
Height: 305
 2x bin (LM 530) 8L, and
 1x bin (LM 533) 11L.
 Dampener integrated in the
 runners.

🏠 **LM 71/3H** (anthracite)

new



PULL-OUT WASTE SYSTEM

Width: 705
Depth: 320/505
Height: 320
 2x bin (LM 530) 8L,
 1x bin (LM 533) 11L, and
 1x bin (LM 531) 16L.

🏠 **LM 75/4** (anthracite)

new



PULL-OUT WASTE SYSTEM

Width: 705
Depth: 320/505
Height: 320
 4x bin (LM 530) 8L, and
 1x bin (LM 533) 11L.

🏠 **LM 75/5** (anthracite)

Accessories (pp. 13 to 14): Soft-close, various bin and lid options, pull-out top tray.

- Mounting to door and cabinet bottom plate.
- The advantage of bottom mounting is that the width of the cabinet is not the critical measurement.
- By installing the door attached to the cart, the cart slides out of the cabinet with the door.
- Can also be installed behind a hinged door without door mounting.
- The pull-out waste system includes pitch, height, and lateral adjustment.
- Waste carts are manufactured from tough steel, and they are finished with impact-proof epoxy.
- The runners' maximum load is 100 kg in models without integrated dampener. Maximum load 40 kg in models with integrated dampener.
- The waste system's runners are protected from dust and food scrap.
- Pull-out waste systems with two depth measurements: first measurement is the depth of the bin frame, the second is the total depth.



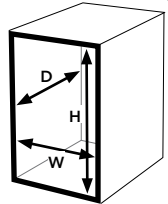


waste sorting frame – Lux

Lux sorting systems with soft close runners (door+wall mounting)



Start by measuring your cabinet's inner dimensions: width, depth, and height.



- Mounting to door and cabinet sidewalls.
- Self-closing, dampening and silenced runner mechanism.
- Sorting frames are manufactured from tough steel, and they are finished with impact-proof epoxy.
- The runners work extremely smoothly, and their maximum load bearing capacity is 30 kg.
- The product extends completely from the cabinet.
- The runners include door height and lateral adjustment.
- Install height with bins 310 mm.
- Door height min. 350 mm, max. 703 mm.
- Extremely solid mounting to door with the included extra support, LM 702.
- Possible to install two Lux sorting frames one on top another, when the door height permits it.
- Thanks to its sheet metal structure, the sorting frame is easy to keep clean.
- The sales packaging includes an installing template to make installing easier.

Lux sorting frame included with delivery. Bins sold separately (p. 13).



LUX SORTING FRAME

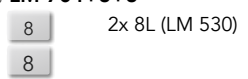
Width: 366-369
Depth: 400
Height: 310

Fits in cabinet with inner width of 366 mm to 369 mm.

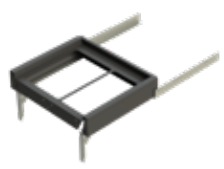
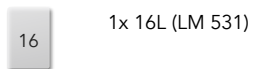
LM 704 (anthracite)

Bin options for Lux LM 704 sorting frame:

🏠 **LM 704+8+8**



🏠 **LM 704+16**



LUX SORTING FRAME

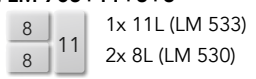
Width: 466-469
Depth: 400
Height: 310

Fits in cabinet with inner width of 466 mm to 469 mm.

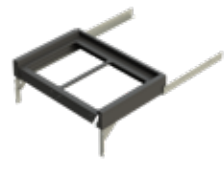
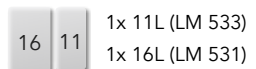
LM 705 (anthracite)

Bin options for Lux LM 705 sorting frame:

🏠 **LM 705+11+8+8**



🏠 **LM 705+11+16**



LUX SORTING FRAME

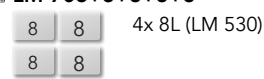
Width: 566-569
Depth: 400
Height: 310

Fits in cabinet with inner width of 566 mm to 569 mm.

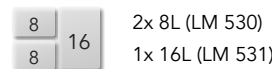
LM 706 (anthracite)

Bin options for Lux LM 706 sorting frame:

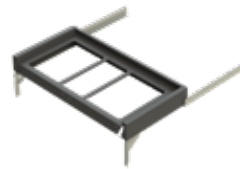
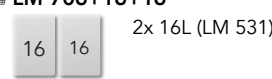
🏠 **LM 706+8+8+8+8**



🏠 **LM 706+8+8+16**



🏠 **LM 706+16+16**



LUX SORTING FRAME

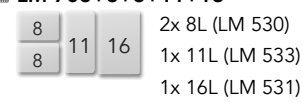
Width: 766-769
Depth: 400
Height: 310

Fits in cabinet with inner width of 766 mm to 769 mm.

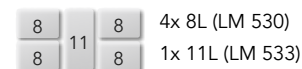
LM 708 (anthracite)

Bin options for Lux LM 708 sorting frame:

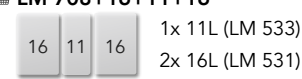
🏠 **LM 708+8+8+11+16**



🏠 **LM 708+8+8+11+8+8**



🏠 **LM 708+16+11+16**



Accessories (p. 13): Various bin and lid options, VIVA-Cov accessory tray with runners.



sorting cabinet accessories

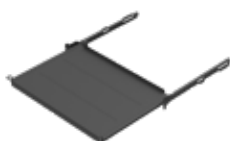
Accessories for sorting cabinets and Lux sorting frame



ADJUSTABLE DOOR SUPPORT

Zinc/sheet metal. Screw mounting. Mounted on Grass XP runner. The adjustable door support enables firm front mounting of waste system on the door. Door pitch adjustment also on the support plate. Suitable for minimum 350 mm high door. Please request availability for other runner models.

- LM 702 (gloss zinc)



VIVA-COV ACCESSORY TRAY WITH ROLLER RUNNERS

Depth: 400/421 Height: 50
LM 724 (anthracite) Fits in cabinet with inner width of 366-370 mm.
LM 725 (anthracite) Fits in cabinet with inner width of 466-470 mm.
LM 726 (anthracite) Fits in cabinet with inner width of 566-570 mm.
LM 728 (anthracite) Fits in cabinet with inner width of 766-770 mm.



OPENING CURVE

Mechanism which brings the waste cart out of the cabinet, when the door is opened. The mechanism fits waste carts LM 64, LM 65, LM 66, LM 79. An installation guide, sleeve, and retaining screws included with the product.

- LM 119 (white)
- LM 119 (anthracite)

A video about the opening curve operation:



DAMPENER

Width: 33 Depth: 252 Height: 16
The dampener receives the waste cart and pulls the cart automatically inside the cabinet. The dampener fits products LM 70, 75, 77, 78

- LM 59 (grey/black)

Video about dampener operation:



waste recycling supplies

Waste recycling supplies for waste carts and Lux sorting frames



WASTE BIN 8L

Width: 150 Depth: 230 Height: 285
HD polyethylene. Fits in LM waste carts. Lid LM 532 fits on the bin.

- LM 530 (anthracite)
- LM 530 (blue)
- LM 530 (yellow)
- LM 530 (brown)



LID 8L

Width: 155 Depth: 230 Height: 10
Polypropylene. Fits in LM 530 waste bin.

- LM 532 (anthracite)
- LM 532 (brown)



WASTE BIN 11L

Width: 150 Depth: 305 Height: 285
HD polyethylene. Fits in LM waste carts

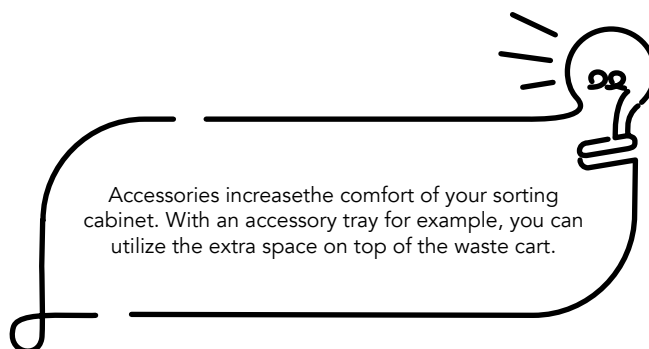
- LM 533 (anthracite)



WASTE BIN 16L

Width: 230 Depth: 305 Height: 285
HD polyethylene. Fits in LM waste carts

- LM 531 (anthracite)





BATTERY BIN 0.5L

Width: 95
Depth: 85
Height: 110

Fits in LM waste bins LM 516, LM 518, LM 520, LM 530, LM 531 and LM 533.

🗑️ **LM 524** (red)



BIO-WASTE BIN 5.5L

Width: 270
Depth: 120
Height: 240

HD polyethylene. Door and wall mounting option. The bin may be permanently mounted to a wall/door by a screw, or it can be hung using bin holder LM 329.

🗑️ **LM 522** (white)
🗑️ **LM 522** (black)



BIN HOLDER

Width: 188

Epoxy/steel wire. Screw mounting. Fits in bins LM 522, LM 320. The IP package contains one bin holder and mounting screws.

🗑️ **LM 329** (white)



WASTE BIN 9L

Width: 320
Depth: 220
Height: 270

HD polyethylene. The bin may be attached on a door or wall using a bin holder LM 329.

🗑️ **LM 320** (white)
🗑️ **LM 320** (black)
🗑️ **LM 320** (blue)



LID 9L

Width: 285
Depth: 230
Height: 38

HD polyethylene. Lid for the bin LM 320

🗑️ **LM 339** (white)



BIO-WASTE BIN 6L

Width: 105
Depth: 258
Height: 307

HD polyethylene. Fits in LM waste carts.

🗑️ **LM 516** (white)
🗑️ **LM 516** (anthracite)



LID 6L

Width: 90
Depth: 244
Height: 35

HD polyethylene. Lid for the bin LM 516.

🗑️ **LM 517** (white)



BIO-WASTE BIN 10L

Width: 160
Depth: 258
Height: 307

PP or HDPE. Fits in LM waste carts.

🗑️ **LM 518** (white)
🗑️ **LM 518** (anthracite)



LID 10L

Width: 145
Depth: 244
Height: 35

HD polyethylene. Lid for the bin LM 518.

🗑️ **LM 519** (white)
🗑️ **LM 519** (anthracite)



WASTE BIN 11.5L

Width: 290
Depth: 240
Height: 280

PP or HDPE. Fits in LM waste carts.

🗑️ **LM 520** (white)
🗑️ **LM 520** (anthracite)
🗑️ **LM 520** (red)
🗑️ **LM 520** (blue)
🗑️ **LM 520** (brown)



LID 11.5L

Width: 280
Depth: 200
Height: 45

Polypropylene. Lid for bin LM 520.

🗑️ **LM 521** (white)



WASTE BAG STAND

Width: 287
Depth: 170
Height: 360

Epoxy-coated steel wire. Screw mounting. For approximately 20L waste bags.

🗑️ **LM 87** (white)



LID FOR WASTE BAG STAND

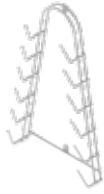
Width: 300
Depth: 180
Height: 19

HD polyethylene. Lid for waste bag stand LM 87.

🗑️ **LM 338** (white)



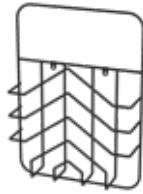
kitchen racks and shelves



KETTLE LID STAND

Width: 200
Depth: 70
Height: 360
Polyethylene/steel wire.
Screw mounting.

🏠 LM 315 (white)



ARROW – MAGAZINE RACK

Width: 270
Depth: 650
Height: 370
Epoxy/steel wire.
Screw mounting.

🏠 LM 42 (black)



OUT OF THE BOX – SHELF

Width: 620
Depth: 240
Height: 240
The frame of epoxy/steel pipe,
shelves of furniture board. Shelf
level color options are birch and
oak. Shelf level measurements
16 x 198 x 578.

🏠 LM 116 (black/birch)

🏠 LM 116 (black/oak)



FEET UP – WINE GLASS TRAY

Width: 105
Depth: 270
Height: 40
Epoxy/steel wire.
The tray fits three wine glasses.
Maximum base diameter 9 cm.

🏠 LM 43 (anthracite)

🏠 LM 43 (black)





pot and supply carts



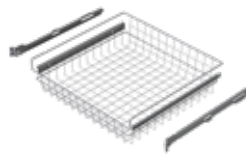
FRONT FIXING SET, FOR POT CARTS WITH DAMPENING RUNNERS

Zinc/sheet metal.
The front mounting set enables mounting of the pot cart on the door.
Min. door height 180 mm.
Mounting set includes pitch and height adjustment for the door.



Tip! See anti-slip mats for pot carts on pages 25 and 27. They stop dishes from sliding.

🏠 **LM 701** (gloss zinc)



POT CART, WITH RUNNERS

Depth: 500
Height: 140

Epoxy/steel wire.
Variations in cabinet inner dimensions have been taken into account by c. 4 mm.
The rail structure prevents the basket from colliding with the cabinet back wall, or falling out of the rails in lateral direction or when pulled out. Neither will they scratch the cabinet door.

- 🏠 **LM 610** (silver)
Cabinet inner width 366-370.
- 🏠 **LM 612** (silver)
Cabinet inner width 466-470.
- 🏠 **LM 614** (silver)
Cabinet inner width 566-570.



POT CART, WITH DAMPENING RUNNERS

Depth: 500
Height: 140

Basket epoxy/steel wire, rails zinc/steel.
Product adjusts to cabinet body, and allows the variation of the cabinet inner dimensions by c. 4 mm.

The wire basket slides entirely out of the cabinet, slows down when pushed in, and automatically retracts into the cabinet. The basket can be removed from the cabinet, when necessary.

- 🏠 **LM 770** (anthracite)
Cabinet inner width 366-370.
- 🏠 **LM 772** (anthracite)
Cabinet inner width 466-470.
- 🏠 **LM 774** (anthracite)
Cabinet inner width 566-570.
- 🏠 **LM 776** (anthracite)
Cabinet inner width 766-770.

corner cabinets



CORNER CAROUSEL 1/2

Epoxy/steel wire. Upper shelf height is steplessly adjustable. Shelf height 75mm.

- 🏠 **LM 224** (anthracite)
- 🏠 **LM 224** (silver)

Depth: 365
Height: 460
Diameter: 670

Cabinet inner dimensions must be at least 700x440 mm, and width of door opening at least 380 mm.

- 🏠 **LM 227** (anthracite)
- 🏠 **LM 227** (silver)

Depth: 450
Height: 460
Diameter: 830

Cabinet inner dimensions must be at least 860x570 mm, and width of door opening at least 450 mm.



CORNER CAROUSEL 3/4

Epoxy/steel wire. Upper shelf height is steplessly adjustable. Shelf height 75 mm.

- 🏠 **LM 225** (anthracite)
- 🏠 **LM 225** (silver)

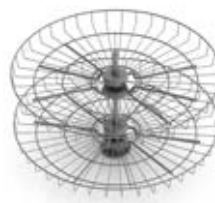
Height: 680
Diameter: 730

Cabinet inner dimensions must be at least 800x800 mm, and width of door opening at least 400 mm. The carousel includes upper mounting support LM 237.

- 🏠 **LM 228** (anthracite)
- 🏠 **LM 228** (silver)

Height: 680
Diameter: 800

Cabinet inner dimensions must be at least 850x850 mm, and width of door opening at least 450 mm. The carousel includes upper mounting support LM 237.



CORNER CAROUSEL 4/4

Epoxy/steel wire. Upper shelf height is steplessly adjustable. Shelf height 75 mm.

- 🏠 **LM 226** (silver)

Height: 460
Diameter: 900



SHELF 1/4

Epoxy/steel wire. Detachable shelf completes the 3/4 carousel (LM 225, 228) into round one.

- 🏠 **LM 219** (silver)
fits in corner carousel LM 225
- 🏠 **LM 229** (silver)
fits in corner carousel LM 228



CAROUSEL ANTI-SLIP MAT 1/2

- 🏠 **LM 684 670** (black)
for carousel LM 224
- 🏠 **LM 684 830** (black)
for carousel LM 227

CAROUSEL ANTI-SLIP MAT 3/4

- 🏠 **LM 685 730** (black)
for carousel LM 225
- 🏠 **LM 685 800** (black)
for carousel LM 228



CAROUSEL UPPER SUPPORT

Sleeve ABS, tube anodized aluminium. Enables carousel mounting at the top end of the tube. Includes 680 mm tube and mounting sleeve.

- 🏠 **LM 237** (silver)
- 🏠 **LM 237** (anthracite)





stools and chairs

Stools are intended for household use only.

**STEP STOOL**

Width: 340
Depth: 390
Height: 610

Plastic covers.

Epoxy coated steel frame, tube diameter 16 mm.

- 🏠 **LM 182** (silver/grey)
- 🏠 **LM 182** (black/black)
- 🏠 **LM 182** (white/white)

**STEP STOOL**

Width: 345
Depth: 395
Height: 620

Top and stairs wood.

Epoxy coated steel frame, tube diameter 19 mm.

- 🏠 **LM 183** (chrome/birch)
- 🏠 **LM 183** (chrome/walnut)
- 🏠 **LM 183** (chrome/black)
- 🏠 **LM 183** (chrome/glossy white)

**STEP STOOL**

Width: 345
Depth: 395
Height: 620

Top and stairs wood.

Epoxy coated steel frame, tube diameter 19 mm.

- 🏠 **LM 184** (silver/birch)
- 🏠 **LM 184** (silver/glossy white)
- 🏠 **LM 184** (silver/walnut)
- 🏠 **LM 184** (black/black)
- 🏠 **LM 184** (white/birch)
- 🏠 **LM 184** (white/glossy white)
- 🏠 **LM 184** (white/walnut)

**STEP STOOL**

Width: 410
Depth: 435
Height: 420

Top and stairs wood.

Epoxy coated steel frame, tube diameter 19 mm.

- 🏠 **LM 185** (chrome/walnut)

**STEP STOOL WITH BACK REST**

Width: 410
Depth: 520
Height: 785

Top and stairs wood.

Chromed steel frame, tube diameter 19 mm.

- 🏠 **LM 187** (chrome/birch)
- 🏠 **LM 187** (chrome/walnut)
- 🏠 **LM 187** (chrome/glossy white)

**BAR STOOL WITH BACK REST**

Width: 430
Depth: 430
Height: 850

Top wood. Seat diameter 350 mm.

Chromed steel frame, tube diameter 19 mm.

- 🏠 **LM 189** (chrome/birch)
- 🏠 **LM 189** (chrome/walnut)
- 🏠 **LM 189** (chrome/glossy white)

**WIRE CHAIR SOOLO**

Width: 478
Depth: 486
Height: 880

Lightweight and stylish wire chair made of steel wire.

Pulver-coated with impact-resistant epoxy. Seat height 46.4 cm.

- 🏠 **LM 186** (black)

**STOOL PLUG**

Rubber mix plastic.

Package 4 pcs.

Tube diameter 19 mm.

Fits products LM 183, 184, 185, 187, 189.

- 🏠 **LM 183081/IP** (white)

**STOOL PLUG**

Rubber mix plastic.

Package 4 pcs.

Tube diameter 16 mm.

Fits stools LM 182

- 🏠 **LM 182047/IP** (black)





systems for bathrooms

Various shelves, baskets, and trays can keep your bathroom items in their proper place, and you can enjoy the shower, even for a longer time. The bathroom stays tidy, as towels and jars each have their own shelves. Our bathroom solutions ease your everyday life and give time for yourself.

Our products are easy to install, and our ranges include shower shelves and baskets which

require no hole drilling. This is made possible by suspendable products, such as the shower basket, and the shower wall rack. Using the screwless install kit, a support can be glued in the desired location to enable suspending a shower shelf. Our products are designed for practicality, and their coatings take into account the demanding conditions of the bathroom.

bathroom baskets, shelves, and racks



new



CORNER SHELF, 2 LEVELS

Width: 230x230
Depth: 255
Height: 310

Epoxy/steel wire. Screw mounted, incl. anthracite LM wall mounting set. Shelf distance 235.

🏠 **LM 593** (chrome)

new



CORNER SHELF, 3 LEVELS

Width: 230x230
Depth: 255
Height: 510

Epoxy/steel wire. Screw mounted, incl. anthracite LM wall mounting set. Lower shelf distance 235, upper 175.

🏠 **LM 594** (chrome)

new



SHOWER SHELF

Width: 255
Depth: 130
Height: 90

Shelf: epoxy/steel wire, bottom: PS plastic, wall mounting section: ABS plastic. Screw mounting.

Black bottom tray of the shower shelf removable for cleaning.

Note accessory LM 599 Screwless install kit.

🏠 **LM 590** (chrome)

🏠 **LM 590** (black)

new



BATHROOM SHELF, 1 TRAY

Width: 330
Depth: 120
Height: 90

Shelf: epoxy/steel wire, bottom: PS plastic, wall mounting section: ABS plastic. Screw mounting.

Black bottom tray of the shower shelf removable for cleaning.

Note accessory LM 599 Screwless install set.

🏠 **LM 591** (chrome)

new



BATHROOM SHELF, 2 TRAYS

Width: 330
Depth: 120
Height: 325

Shelf: epoxy/steel wire, bottom: PS plastic, wall mounting section: ABS plastic. Screw mounting.

Black bottom tray of the shower shelf removable for cleaning.

Note accessory LM 599 Screwless install set.

🏠 **LM 592** (chrome/black)



AIRING RACK

Width: 550
Height: 160

Epoxy/steel wire. The rail can be removed or put aside.

🏠 **LM 53** (white)



SHOWER BASKET

Width: 200
Depth: 100
Height: 300

Epoxy/steel wire. Suspending on a shower pole.

🏠 **LM 196** (chrome)

🏠 **LM 196** (black)

new



SHOWER RACK

Width: 255
Depth: 130
Height: 650

Epoxy/steel wire. Suspended on the shower wall. Support wire inner diameter 30 mm.

🏠 **LM 595** (chrome)

🏠 **LM 595** (black)

new



SCREWLESS INSTALL KIT

Special glue which is used to fix products LM 590, 591, 592 to the bathroom tile without drilling any holes. Easy to install and to remove, if needed. Drying time 24 hrs.

🏠 **LM 599**



CORNER SHELF, PILAR

Width: 230x230
Depth: 220
Ceiling height: max. 2680

Baskets epoxy/steel wire, tube aluminium, plastic parts anthracite ABS. Basket height adjustable steplessly. Incl. 2 tubes, 2 baskets, mounting supplies, and cutting saw.

🏠 **LM 197** (chrome/aluminium)

🏠 **LM 197** (black)



EXTENSION TUBE, PILAR

Height: 1250

Accessory for Pilar corner, incl. joint piece.

🏠 **LM 197/1** (aluminium)

🏠 **LM 197/1** (black)



PILAR BASKET

Width: 230x230
Depth: 220
Height: 80

Epoxy/steel wire, attachment part anthracite ABS. Accessory for the Pilar corner.

🏠 **LM 198** (chrome)

🏠 **LM 198** (black)



BATHROOM



laundry baskets



LAUNDRY BASKET ON CASTERS, LOW

Width: 372
Depth: 372
Height: 435

Thanks to casters, the laundry basket is easy to move around. Note the separately available laundry bag LM 327.

🏠 **LM 325** (black)



LAUNDRY BASKET BAG, LOW

Fits laundry basket LM 325.

🏠 **LM 327** (grey)



LAUNDRY BASKET ON CASTERS, HIGH

Width: 372
Depth: 372
Height: 690

Thanks to casters, the laundry basket is easy to move around. Note the separately available laundry bag LM 328.

🏠 **LM 326** (black)



LAUNDRY BASKET BAG, HIGH

Fits laundry basket LM 326.

🏠 **LM 328** (grey)



LAUNDRY BASKET

Width: 255
Depth: 255
Height: 300

A basket set on the bottom of a cabinet.

🏠 **LM 680** (anthracite)

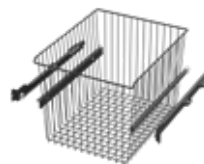


PULL-OUT LAUNDRY BASKET

Width: 235
Depth: 400/421
Height: 300

Cabinet inner width 266-270. Basket depth 400, runner length 421 mm.

🏠 **LM 681** (anthracite)



PULL-OUT LAUNDRY BASKET

Width: 335
Depth: 400/421
Height: 300

Cabinet inner width 366-370. Basket depth 400, runner length 421 mm.

🏠 **LM 682** (anthracite)

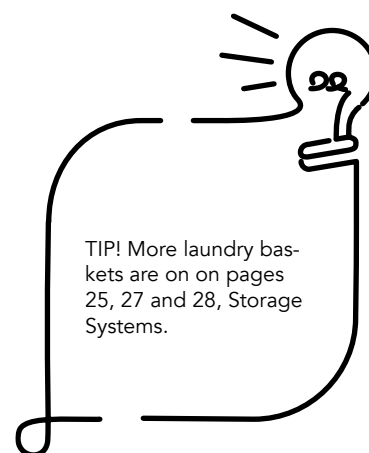


PULL-OUT LAUNDRY BASKET

Width: 260
Depth: 257
Height: 460

Wall mounting, basket removable, runner length 250 mm.

🏠 **LM 683** (anthracite)





STORAGE

Clothing Room – Hallway – Sliding Door Cabinets –
Cupboards – Cleaning Closet



systems for storage

Our versatile and modifiable products offer solutions for a common problem: there's little space, but a lot of storable things.

Imagination is the key to many things - also with designing closets and other storage spaces. Make sure that your home's storage solutions meet your needs. Even large storage spaces will

not stay tidy, unless the storage solutions are not worked out effective to use. With draw out storage systems, you can avoid unnecessary reaching out, as they slide out of the cabinet. Our storage solutions are retrofitted, and they fit most commonly used closet frames. Our products provide luxury for your everyday life.

soft-closing runner systems



STORAGE

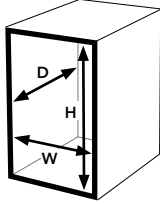
A whole new level of wire basket functionality!

The pull-out wire baskets are also available with a soft closing function. You can avoid unnecessary stretching while using the baskets thanks to sliding runners which extends completely out of the cabinet. The wire basket

slides softly, slows down the speed when pushed in, and slides automatically in the cabinet. Unique design of wire baskets allows for maximum storage capacity.



Start the selection of suitable product by measuring your cabinet's inner dimensions: width, depth, and height.



- Product construction prevents collisions with the closet back wall, or falling in lateral direction, or when pulled out.
- The product does not scrape the door due to its design.
- Installing is easy due to the integrated 13 mm raiser strip in the frame rails.
- Two measurements for soft closing baskets: first is for basket height, the second is for total height with runners.
- Suited for both hinged and sliding door cabinets.



SOFT CLOSING BASKET, LOW

Depth: 440
Height: 140/175

Basket epoxy/steel wire, rails zinc/steel. Load bearing 30kg.

- 🏠 **LM 760** (anthracite)
Cabinet inner width 366-370.
- 🏠 **LM 762** (anthracite)
Cabinet inner width 466-470.
- 🏠 **LM 764** (anthracite)
Cabinet inner width 566-570.
- 🏠 **LM 766** (anthracite)
Cabinet inner width 766-770.

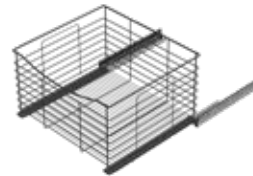


SOFT CLOSING BASKET, LOW

Depth: 500
Height: 140/175

Basket epoxy/steel wire, rails zinc/steel. Load bearing 30kg.

- 🏠 **LM 770** (anthracite)
Cabinet inner width 366-370.
- 🏠 **LM 772** (anthracite)
Cabinet inner width 466-470.
- 🏠 **LM 774** (anthracite)
Cabinet inner width 566-570.
- 🏠 **LM 776** (anthracite)
Cabinet inner width 766-770.

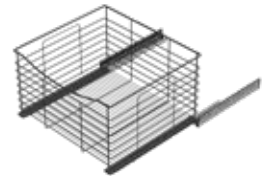


SOFT CLOSING BASKET, HIGH

Depth: 440
Height: 300/335

Basket epoxy/steel wire, rails zinc/steel. Load bearing 30kg.

- 🏠 **LM 761** (anthracite)
Cabinet inner width 366-370.
- 🏠 **LM 763** (anthracite)
Cabinet inner width 466-470.
- 🏠 **LM 765** (anthracite)
Cabinet inner width 566-570.



SOFT CLOSING BASKET, HIGH

Depth: 500
Height: 300/335

Basket epoxy/steel wire, rails zinc/steel. Load bearing 30kg.

- 🏠 **LM 771** (anthracite)
Cabinet inner width 366-370.
- 🏠 **LM 773** (anthracite)
Cabinet inner width 466-470.
- 🏠 **LM 775** (anthracite)
Cabinet inner width 566-570.



ANTI-SLIP MAT FOR SOFT CLOSING BASKET

Thickness 1
Black. Rubber & plastic composite. The bottom boards can be fitted to other products by using scissors.

- 🏠 **LM 673** (width 300)
fits basket LM 770/771
- 🏠 **LM 673** (width 400)
fits basket LM 772/773
- 🏠 **LM 673** (width 500)
fits basket LM 774/775
- 🏠 **LM 673** (width 700)
fits basket LM 776



FRONT ATTACHMENT KIT FOR SOFT CLOSING BASKET

Zinc/sheet metal.
The front mounting set enables mounting of the dampening basket on the door. Not compatible with trouser rack.

- Min. door height 180 (basket height 140), or 340 (basket height 300).
- Mounting set includes pitch and height adjustment for the door.
- 🏠 **LM 701** (gloss zinc)



SOFT CLOSING TROUSER RACK

Depth: 440
Height: 100
Rack epoxy/steel wire, runners zinc/steel. Load bearing 30kg.

- 🏠 **LM 836** (anthracite)
Cabinet inner width 566-570.
- 🏠 **LM 838** (anthracite)
Cabinet inner width 766-770.





STORAGE



Using various sizes of rolling baskets, you can build a storage system meeting your needs into existing cabinetry. When clothes are in neat order, you always know where to find certain ones. Unlike traditional shelves, a wire basket gathers no dust, and clothes stay fresh for longer.

Dividers are available for low rolling basket for dividing the basket in two or more zones. With dividers, you can arrange the gloves and woolly hats in their own space in the hall cabinet. In bedroom dressing baskets, the dividers are well suited for example organizing the sock basket.

A handy trouser rack helps keeping your trouser in order, and at the same time they are kept straight and tidy during storage. Smaller items, such as handbags or belts, can be kept on the trouser rack tray.

With shoe shelves, your shoes stay in good shape and organized. Both flat sole and heeled shoes go in two rows in the shoe shelf. Note also other shoe storage solution on page 33.

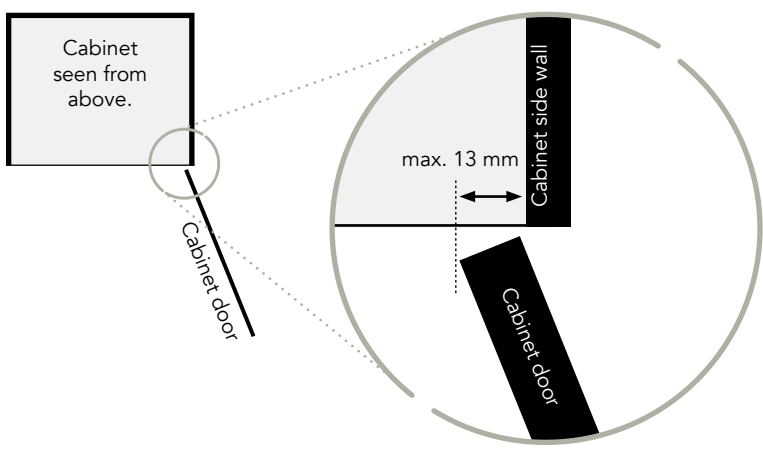
Shelves are great for storing storage boxes intended small items, and especially for upper sections of cabinets. You can see through the shelf, thanks to the steel wire construction, so you don't need to guess what you are keeping in the upper section. Thanks to the airy structure, dust doesn't accumulate in places where it is hard to clean up.



- Products are suited both for hinged door and sliding door cabinets.
- Product construction prevents collisions with the closet back wall, or falling in lateral direction, or when pulled out.
- The product does not scrape the door due it's design.
- Installing is easy due to the integrated 13 mm raiser strip in the cabinet runners.
- Products roll lightly thanks to the nylon rollers of the runners.
- Anti-slip mats are available for baskets, and the same Anti-slip mats fit shoe trays, for example. By installing a hard bottom board on the shoe tray, the shoes under it will avoid dirt and damp.

Measuring instructions

- Fits cabinet with hinged door, where the door is no more than 13 mm in front of the cabinet. Measurement is made from inside the cabinet, from side wall to the door edge.



roller runner systems



ROLLER BASKET, LOW

Depth: 440
Height: 140

Epoxy/steel wire

- 🏠 **LM 600** (silver)
Cabinet inner width 366-370.
Package cont. 2 pcs.
- 🏠 **LM 602** (silver)
Cabinet inner width 466-470.
Package cont. 2 pcs.
- 🏠 **LM 604** (silver)
Cabinet inner width 566-570.
Package cont. 2 pcs.
- 🏠 **LM 606** (silver)
Cabinet inner width 766-770.
- 🏠 **LM 608** (silver)
Cabinet inner width 966-970.



ROLLER BASKET, LOW

Depth: 500
Height: 140

Epoxy/steel wire

- 🏠 **LM 610** (silver)
Cabinet inner width 366-370.
Package cont. 2 pcs.
- 🏠 **LM 612** (silver)
Cabinet inner width 466-470.
Package cont. 2 pcs.
- 🏠 **LM 614** (silver)
Cabinet inner width 566-570.
Package cont. 2 pcs.
- 🏠 **LM 616** (silver)
Cabinet inner width 766-770.



ROLLER BASKET, HIGH

Depth: 440
Height: 320

Epoxy/steel wire

- 🏠 **LM 601** (silver)
Cabinet inner width 366-370.
- 🏠 **LM 603** (silver)
Cabinet inner width 466-470.
- 🏠 **LM 605** (silver)
Cabinet inner width 566-570.



ROLLER BASKET, HIGH

Depth: 500
Height: 320

Epoxy/steel wire

- 🏠 **LM 611** (silver)
Cabinet inner width 366-370.
- 🏠 **LM 613** (silver)
Cabinet inner width 466-470.
- 🏠 **LM 615** (silver)
Cabinet inner width 566-570.

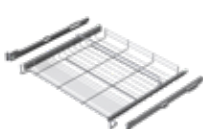


SHELVES

Depth: 430
Height: 55

Epoxy/steel wire

- 🏠 **LM 640** (silver)
Cabinet inner width 366-370.
Package cont. 2 pcs.
- 🏠 **LM 641** (silver)
Cabinet inner width 466-470.
Package cont. 2 pcs.
- 🏠 **LM 642** (silver)
Cabinet inner width 566-570.
Package cont. 2 pcs.
- 🏠 **LM 643** (silver)
Cabinet inner width 766-770.
- 🏠 **LM 644** (silver)
Cabinet inner width 966-970.



SHOE SHELVES

Depth: 430
Height: 110

Epoxy/steel wire

- 🏠 **LM 645** (silver)
Cabinet inner width 366-370.
- 🏠 **LM 646** (silver)
Cabinet inner width 466-470.
- 🏠 **LM 647** (silver)
Cabinet inner width 566-570.
- 🏠 **LM 648** (silver)
Cabinet inner width 766-770.
- 🏠 **LM 649** (silver)
Cabinet inner width 966-970.



SHOE SHELVES

Depth: 485
Height: 80

Epoxy/steel wire

- 🏠 **LM 656** (silver)
Cabinet inner width 466-470.
- 🏠 **LM 657** (silver)
Cabinet inner width 566-570.
- 🏠 **LM 658** (silver)
Cabinet inner width 766-770.
- 🏠 **LM 659** (silver)
Cabinet inner width 966-970.

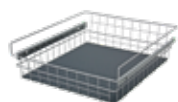


TROUSER RACKS

Depth: 430
Height: 105

Epoxy/steel wire

- 🏠 **LM 650** (silver)
Cabinet inner width 366-370.
- 🏠 **LM 651** (silver)
Cabinet inner width 466-470.
- 🏠 **LM 652** (silver)
Cabinet inner width 566-570.
- 🏠 **LM 653** (silver)
Cabinet inner width 766-770.
- 🏠 **LM 654** (silver)
Cabinet inner width 966-970.



ANTI-SLIP MAT FOR ROLLER BASKETS

Depth: 456
Thickness: 1

Grey. Rubber & plastic composite. The bottom boards can be fitted to other products by using scissors.

- 🏠 **LM 670** (width 291)
fits basket LM 610
- 🏠 **LM 671** (width 391)
fits basket LM 612
- 🏠 **LM 672** (width 500)
fits basket LM 614



DIVIDER FOR ROLLER BASKETS, LOW

Depth: 440
Height: 140

Epoxy/steel wire. Makes organising items easier. One rolling basket can fit several dividers.

- 🏠 **LM 619** (silver)
Accessory for rolling baskets LM 600, LM 602, LM 604, LM 606, LM 608



DIVIDER FOR ROLLER BASKETS, LOW

Depth: 500
Height: 140

Epoxy/steel wire. Makes organising items easier. One rolling basket can fit several dividers.

- 🏠 **LM 620** (silver)
Accessory for rolling baskets LM 601, LM 603, LM 605



RAISER STRIP

Thickness: 3
Length: 432

Polypropylene. Fits all roller products.

When the cabinet width differs from standard, one or several raiser strips can be added between runner and cabinet wall.

- 🏠 **LM 617** (grey)



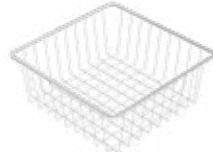
sliding baskets (cabinet baskets)

**SLIDING BASKET, LOW****Height:** 100

Epoxy/steel wire, flat wire.

Choose a suitable sliding strip from options LM 214-216.

- 🏠 **LM 277** (white)
Width 335, depth 435
- 🏠 **LM 280** (white)
Width 335, depth 535
- 🏠 **LM 279** (white)
Width 435, depth 435
- 🏠 **LM 282** (white)
Width 435, depth 535
- 🏠 **LM 285** (white)
Width 535, depth 535

**SLIDING BASKET, MEDIUM HIGH****Height:** 200

Epoxy/steel wire, flat wire.

Choose a suitable sliding strip from options LM 214-216.

- 🏠 **LM 278** (white)
Width 335, depth 435
- 🏠 **LM 281** (white)
Width 335, depth 535
- 🏠 **LM 284** (white)
Width 435, depth 435
- 🏠 **LM 283** (white)
Width 435, depth 535
- 🏠 **LM 286** (white)
Width 535, depth 535

**SLIDING BASKET, HIGH****Height:** 350

Epoxy/steel wire, flat wire.

Choose a suitable sliding strip from options LM 214-216.

- 🏠 **LM 292** (white)
Width 235, depth 335
- 🏠 **LM 293** (white)
Width 235, depth 435
- 🏠 **LM 294** (white)
Width 235, depth 535
- 🏠 **LM 298** (white)
Width 335, depth 335
- 🏠 **LM 295** (white)
Width 335, depth 435
- 🏠 **LM 290** (white)
Width 335, depth 535
- 🏠 **LM 296** (white)
Width 435, depth 435
- 🏠 **LM 291** (white)
Width 435, depth 535
- 🏠 **LM 297** (white)
Width 535, depth 535

**CABINET BASKET SLIDING STRIP**

Polystyrene

- 🏠 **LM 214** (white)
Length 450, thickness 16
- 🏠 **LM 215** (white)
Length 450, thickness 11.5
- 🏠 **LM 216** (white)
Length 560, thickness 16.5

**RAISER STRIP**

HD polyethylene

- 🏠 **LM 218** (white)
Length 495, thickness 13



Choose suitable sliding strip as follows: 2 x sliding strip thickness + basket width = approximately 1 mm to 3 mm smaller than the inner width of the cabinet.

Note! Sliding strips are sold individually, not in pairs.





**BASKET RACK, LOW****Height:** 675

Epoxy/steel wire, steel tube.
Use basket sets individually,
side by side, or stack them.
Only hammer needed for
assembly!

- 🏠 **LM 350/2** (white):
- 🏠 **LM 350/2** (silver):
Width 350, Depth 500.
Baskets: 2x285 high
- 🏠 **LM 350/3** (white):
- 🏠 **LM 350/3** (silver):
Width 350, Depth 500.
Baskets: 2x140 and 1x285 high
- 🏠 **LM 350/4** (white):
- 🏠 **LM 350/4** (silver):
Width 350, Depth 500.
Baskets: 4x140 high
- 🏠 **LM 352/2** (white):
- 🏠 **LM 352/2** (silver):
Width 450, Depth 500.
Baskets: 2x285 high
- 🏠 **LM 352/3** (white):
- 🏠 **LM 352/3** (silver):
Width 450, Depth 500.
Baskets: 2x140 and 1x285 high
- 🏠 **LM 352/4** (white):
- 🏠 **LM 352/4** (silver):
Width 450, Depth 500.
Baskets: 4x140 high
- 🏠 **LM 353/2** (white):
- 🏠 **LM 353/2** (silver):
Width 550, Depth 500.
Baskets: 2x285 high
- 🏠 **LM 353/3** (white):
- 🏠 **LM 353/3** (silver):
Width 550, Depth 500.
Baskets: 2x140 and 1x285 high
- 🏠 **LM 353/4** (white):
- 🏠 **LM 353/4** (silver):
Width 550, Depth 500.
Baskets: 4x140 high.

**BASKET RACK, HIGH****Height:** 915

Epoxy/steel wire, steel tube.
Use basket sets individually,
side by side, or stack them.
Only hammer needed for
assembly!

- 🏠 **LM 355/3** (white):
- 🏠 **LM 355/3** (silver):
Width 350, depth 500
Baskets: 1x140 and 2x285 high
- 🏠 **LM 355/4** (white):
- 🏠 **LM 355/4** (silver):
Width 350, depth 500
Baskets: 3x140 and 1x285 high
- 🏠 **LM 355/5** (white):
- 🏠 **LM 355/5** (silver):
Width 350, depth 500
Baskets: 5x140 high
- 🏠 **LM 356/3** (white):
- 🏠 **LM 356/3** (silver):
Width 450, depth 500
Baskets: 1x140 and 2x285 high
- 🏠 **LM 356/4** (white):
- 🏠 **LM 356/4** (silver):
Width 450, depth 500
Baskets: 3x140 and 1x285 high
- 🏠 **LM 356/5** (white):
- 🏠 **LM 356/5** (silver):
Width 450, depth 500
Baskets: 5x140 high
- 🏠 **LM 357/3** (white):
- 🏠 **LM 357/3** (silver):
Width 550, depth 500
Baskets: 1x140 and 2x285 high
- 🏠 **LM 357/4** (white):
- 🏠 **LM 357/4** (silver):
Width 550, depth 500
Baskets: 3x140 and 1x285 high
- 🏠 **LM 357/5** (white):
- 🏠 **LM 357/5** (silver):
Width 550, depth 500
Baskets: 5x140 high.

Basket Rack Accessories:**CASTER KIT**

Epoxy/steel, casters plastic.

The basket rack is easy to move
around with the wheels. Instead
of bottom fixture tube, a tube
with casters is attached. Incl.
parts for one basket rack (4x
casters, 2x caster joint tubes).

Note! Casters cannot be instal-
led on the standard bottom
fixture tube.

- 🏠 **LM 274** (350 white)
- 🏠 **LM 274** (350 silver)
Length 350 is suited for basket
racks LM 350 and LM 355.
- 🏠 **LM 274** (450 white)
- 🏠 **LM 274** (450 silver)
Length 450 is suited for basket
racks LM 352 and LM 356.
- 🏠 **LM 274** (550 white)
- 🏠 **LM 274** (550 silver)
Length 550 is suited for basket
racks LM 353 and LM 357.

basket racks

**CLOTHES TUBE SUPPORT FOR BASKET RACK**

Epoxy/steel.

Installed on top of the slider
strip of the basket rack. The
tube is locked with locking
screw. Fits all LM basket racks.

Fits 25 mm furniture tube. The
clothes tube support can be
installed in adjacent basket
racks, and between these
comes the furniture tube. When
needed, the other end of the
tube can also be attached using
a regular tube support to a wall.

- 🏠 **LM 383** (white)
- 🏠 **LM 383** (silver)

**BASKET STOPPER**

ABS plastic. Installed in the rack
roller of the basket rack, stops
the basket from dropping when
pulled out. Basket's exit length
can be adjusted.

- 🏠 **LM 366** (white)
- 🏠 **LM 366** (grey)



clothes tubes & supports



CLOTHES TUBES

Diameter: 25

Epoxy/steel pipe. Tube wall thickness 1.

- 🏠 **LM 333** (white) Length: 562
- 🏠 **LM 333** (silver) Length: 562
- 🏠 **LM 333** (anthracite) Length: 562
- 🏠 **LM 334** (white) Length: 1162
- 🏠 **LM 334** (silver) Length: 1162
- 🏠 **LM 335** (white) Length: 1500
- 🏠 **LM 335** (silver) Length: 1500
- 🏠 **LM 332** (white) Length: 2000
- 🏠 **LM 336** (white) Length: 3000



CLOTHES TUBE SUPPORT

Diameter: 25

Nylon. Screw mounting.

- 🏠 **LM 385** (white) Support for 25 mm tube
- 🏠 **LM 385** (anthracite) Support for 25 mm tube



CLOTHES TUBE SUPPORT

Diameter: 25

ABS. Screw mounting.

- 🏠 **LM 303** (white) Support for 25 mm tube



CLOTHES TUBE SUPPORT

Diameter: 28

ABS. Screw mounting.

- 🏠 **LM 308** (white) Support for 28 mm tube

wall storage system & shelves



WALL RAIL

Epoxy/steel. Screw mounting.

- 🏠 **LM 815** (white) length 1 m
- 🏠 **LM 816** (white) length 2 m



SHELF SUPPORT

Length: 350

Epoxy/steel. Suspended from the wall rail. Fits on wall rails LM 815 and LM 816. Under the support are fixing holes for furniture board or wire shelf install strip LM 818.

- 🏠 **LM 817** (white)



WIRE SHELF INSTALL STRIP

The install strip enables attachment of the wire shelf on the shelf support LM 817. Clothes tube support LM 824 fits underneath the install strip.

- 🏠 **LM 818** (white)



WIRE SHELF

Epoxy/steel wire

On LM 820 Wire shelf, the installing distance of the wall rails from center to center max 603 mm.

On LM 821 Wire shelf, the installing distance of the wall rails from center to center max 903 mm.

- 🏠 **LM 820** (white) length 600
- 🏠 **LM 821** (white) length 900



INSTALL RAIL

Epoxy/steel

Screw mounting. Attached above the wall rails to the wall. Rail support LM 823 is suspended from the install rail, and wall rail LM 815 or LM 816 is suspended from the support. Makes installing easy. Recommended to be used, when shelf modules are installed several alongside.

- 🏠 **LM 826** (white) length 900
- 🏠 **LM 827** (white) length 1900



INSTALL RAIL SUPPORT

Epoxy/steel

Suspended from the install rail. The support is freely movable in lateral direction on the install rail. A wall rail is installed below the support.

- 🏠 **LM 823** (white)



CLOTHES TUBE SUPPORT

Epoxy/steel

Suspended on the shelf support. The support accepts 25 mm tube.

- 🏠 **LM 824** (white)



CLOTHES TUBE END PLUG

Fits 25 mm tube. Finishes installing and prevents the tube from falling off the support.

- 🏠 **LM 825** (black)



STORAGE



shoe racks



STORAGE



STORAGE TOWER, 8 SHELVES

Width: 330
Depth: 500
Height: 1705
Epoxy/steel wire.

Pull-out, easy-to-install model that slides out completely. No handedness, raiser strip integrated into the frame structure. Load bearing 20 kg. The product fits 16 pairs of shoes.

🏠 **LM 686** (anthracite)

new



STORAGE TOWER, 4 SHELVES

Width: 330
Depth: 500
Height: 670
Epoxy/steel wire.

Load bearing 20 kg. The product fits 8 pairs of shoes.

🏠 **LM 687** (anthracite)



SHOE RACK

Depth: 300
Height: 250

Epoxy/steel wire, flat wire. 2 levels. Ends in polystyrene. Assembly without tools. Shelf spacing 120 or 140.

🏠 **LM 390** (white)

🏠 **LM 390** (silver)
Width 470

🏠 **LM 391** (white)

🏠 **LM 391** (Silver)

🏠 **LM 391** (Black)
Width 670

🏠 **LM 392** (white)

🏠 **LM 392** (silver)
Width 870

🏠 **LM 393** (white)

🏠 **LM 393** (silver)

🏠 **LM 393** (black)
Width 1070

Example of a 4 level shoe rack:



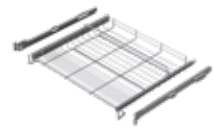
SHOE RACK PLUG KIT

Installing peg kit for 4 level rack

The peg kit can be used to combine two shoe racks.

Zinc/steel.

🏠 **LM 394** (plug kit)



SHOE SHELVES

Depth: 430
Height: 110

Epoxy/steel wire

🏠 **LM 645** (silver)

Cabinet inner width 366-370.

🏠 **LM 646** (silver)

Cabinet inner width 466-470.

🏠 **LM 647** (silver)

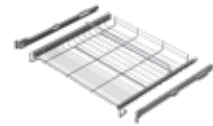
Cabinet inner width 566-570.

🏠 **LM 648** (silver)

Cabinet inner width 766-770.

🏠 **LM 649** (silver)

Cabinet inner width 966-970.



SHOE SHELVES

Depth: 485
Height: 80

Epoxy/steel wire

🏠 **LM 656** (silver)

Cabinet inner width 466-470.

🏠 **LM 657** (silver)

Cabinet inner width 566-570.

🏠 **LM 658** (silver)

Cabinet inner width 766-770.

🏠 **LM 659** (silver)

Cabinet inner width 966-970.





STORAGE

baskets, boxes & poles for doors, walls or shelves



DOOR BASKET

Width: 300

Epoxy/steel wire. Screw mounting.

🏠 **LM 200** (white)
Depth 120, height 150

🏠 **LM 201** (white)
Depth 160, height 260



SERIAL BASKET

Width: 310

Depth: 140

Epoxy/steel wire. Incl. LM wall mounting kit, basket height 100, distance 100

🏠 **LM 206/2** (white)
🏠 **LM 206/2** (silver)
🏠 **LM 206/2** (black)
2 baskets. Height 330

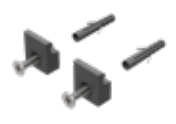
🏠 **LM 206/3** (white)
🏠 **LM 206/3** (silver)
3 baskets. Height 530



SMALL BASKET

Epoxy/steel wire. Incl. LM wall mounting kit.

🏠 **LM 248** (white). Width 310, Depth 140, Height 94.



MOUNTING KIT

Suited for supporting ≤ 6 mm steel wire. IP package cont. 2 pcs fixtures, 2 pcs screws, 2 pcs mounting plugs.

🏠 **LM 575** (white)
🏠 **LM 575** (grey)
🏠 **LM 575** (black)
🏠 **LM 575** (anthracite)



DOOR POLE

Depth: 35

Epoxy/flat steel wire. Screw mounting.

🏠 **LM 300** (white) Width: 314 hole distance 300

🏠 **LM 301** (white) Width: 414 hole distance 400

🏠 **LM 302** (white) Width: 514 hole distance 500



STORAGE BOX 0.5L

Width: 110

Depth: 110

Height: 75

Polystyrene. A handy assistant for organising boxes.

🏠 **LM 525S** (anthracite)



STORAGE BOX 1.0L

Width: 220

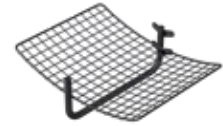
Depth: 110

Height: 75

Polystyrene. A handy assistant for organising boxes.

🏠 **LM 526S** (anthracite)





HANGER

Width: 500

Depth: 400

Height: 155

Epoxy/steel wire, steel tube.

Screw mounting. Hangers are suspended from the coat rack along the back wall, and the curved shape of the shelf keeps hats and gloves in their place.

🏠 **LM 387** (white)

🏠 **LM 387** (black)



HALLWAY BASKET

Width: 473

Depth: 125

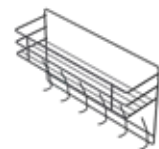
Height: 73

Epoxy/steel wire.

Includes the LM wall mounting kit.

🏠 **LM 324** (white)

🏠 **LM 324** (black)



HANGER BASKET

Width: 500

Depth: 140

Height: 315

Epoxy/steel wire.

Includes the LM wall mounting kit.

🏠 **LM 115** (white)

🏠 **LM 115** (black)





cleaning cupboard



new

**SIIVI CLEANING SUPPLIES CART**

Width: 350
Depth: 500
Height: 1320

Epoxy/steel wire.

Pull-out, easy-to-install model that slides out completely. No handedness, raiser list integrated into the frame structure. Load bearing 20 kg.

🏠 **LM 690** (anthracite)

CLEANING EQUIPMENT RACK, 2 SHELVES

Width: 305
Depth: 90
Height: 660

Epoxy/steel wire.

Place for vacuum cleaner hose, 2 shelves and 3 hooks.

Screw mounting.

Contains LM 575 wall-mounting kit.

🏠 **LM 697** (anthracite)

new

**CLEANING EQUIPMENT RACK, 3 SHELVES**

Width: 305
Depth: 120
Height: 920

Epoxy/steel wire.

Place for vacuum cleaner hose, 3 shelves and 3 hooks.

Screw mounting.

Contains LM 575 wall-mounting kit.

🏠 **LM 698** (anthracite)

VIIVI SUPPLY CART

Width: 250
Depth: 500
Height: 630

Epoxy/steel wire.

Pull-out, easy-to-install model that slides out completely. No handedness, raiser list integrated into the frame structure. Load bearing 20 kg.

🏠 **LM 695** (anthracite)

HOLDER FOR VACUUM CLEANER HOSE

Width: 130
Depth: 65
Height: 70

Epoxy/steel

Screw mounting

🏠 **LM 204** (white)

HOLDER FOR VACUUM CLEANER HOSE

Width: 180
Depth: 45
Height: 45

Shock-proof polystyrene

Screw mounting

🏠 **LM 203** (white)

new

**JEMMA LOCKABLE CABINET**

Width: 250
Depth: 250
Height: 360

ABS plastic, lock and key of steel.

Screw mounting. Contains wall-mounting plate and one shelf. Cabinet can be mounted horizontally or vertically.

Suitable for home medicines and chemicals safe storing.

🏠 **LM 830** (black/anthracite)

RACK FOR CENTRAL VACUUM SYSTEM HOSE

Width: 350
Depth: 120
Height: 120

Epoxy/steel wire

Screw mounting

🏠 **LM 56** (white)



other products



BICYCLE BASKET

Width: 370
Depth: 250
Height: 190
Epoxy-coated steel wire. Suspended from the handlebar of a bicycle.

🏠 **LM 141** (black)

new



HOSE RACK FOR GARDEN HOSE

Width: 320
Depth: 120
Height: 135
Zinc+lacquer/rack steel wire, supports steel. Screw mounting.

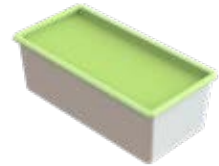
🏠 **LM 55** (gloss zinc)



FREEZING CONTAINER 1/2L

Width: 113
Depth: 113
Height: 75
Food-safe and machine washable. Product includes a lid. Freezing box HD/lid LD polyethylene

🏠 **LM 525** (white/birch green)



FREEZING CONTAINER 1L

Width: 220
Depth: 113
Height: 75
Food-safe and machine washable. Product includes a lid. Freezing box HD/lid LD polyethylene

🏠 **LM 526** (white/birch green)



PRESERVATION CAN 1/2L, 1L, 2L

Can HD/lid LD polyethylene. Package sizing: plastic bag 50 pcs. Includes a lid.

🏠 **LM 460** (1/2L transparent white)
Height: 103
Diameter: 90

🏠 **LM 461** (1L transparent white)
Height: 115
Diameter: 125

🏠 **LM 462** (2L transparent white)
Height: 158
Diameter: 150



PRESERVATION CAN 1L, 2L, 3L

HD polyethylene. Package sizing: plastic bag 20 pcs. Includes a lid.

🏠 **LM 466** (1L transparent white)
Height: 130
Diameter: 125

🏠 **LM 467** (2L transparent white)
Height: 158
Diameter: 150

🏠 **LM 468** (3L transparent white)
Height: 180
Diameter: 168



PRESERVATION JUG 5L

Jug HD/lid LD polyethylene. Package sizing: plastic bag 20 pcs. Includes a lid.

🏠 **LM 470** (5L transparent white)
Height: 210
Diameter: 210



BUCKET 10L

Height: 275
Diameter: 270
HD polyethylene. Thanks to its thick wall, the bucket remains solid even in hot water.

🏠 **LM 472** (birch green)
🏠 **LM 472** (red)
🏠 **LM 472** (blue)
🏠 **LM 472** (yellow)



LID FOR THE 10L BUCKET

LD polyethylene. Sealable for preservation. Fits bin LM 472.

🏠 **LM 473** (transparent white)



WASHBASIN 8L

Diameter: 335
HD polyethylene. Food-safe plastic, suited for hot water.

🏠 **LM 478** (birch green)
🏠 **LM 478** (white)



WASHBASIN 12L

Diameter: 400
HD polyethylene. Food-safe plastic, suited for hot water.

🏠 **LM 479** (birch green)
🏠 **LM 479** (white)



WATER SCOOP

Width: 340
Depth: 190
Height: 100
HD polyethylene. Food-safe plastic, suited for hot water.

🏠 **LM 501** (birch green)
🏠 **LM 501** (white)



FUNNEL

Food-safe HD polyethylene.

🏠 **LM 535** (transparent white)
Diameter 120. No sieve.

🏠 **LM 536** (transparent white)
Diameter 160. With sieve.

🏠 **LM 537** (transparent white)
Diameter 210. With sieve.



INDUSTRIAL BUCKET 18L

Diameter: 360
Height: 280
Food-safe LD polyethylene/zinc-coated steel wire Ø7.0.

🏠 **LM 476** (black)
🏠 **LM 476** (birch green)



AGRICULTURAL BUCKET 14L

Diameter: 320
Height: 260
Food-safe LD polyethylene/zinc-coated steel wire Ø7.0.

🏠 **LM 477** (black)





custom made products for business customers

finnish work and expertise

We manufacture storage solutions for businesses on a turnkey principle. We possess the necessary expertise, experience, and production technology to be able to offer our clients high-quality products cost-efficiently.

Research and development have been central factor for our company since its founding in 1955. For this purpose, we

have our own design and tooling department. Our production specialized in manufacture of steel wire products, powder painting of metals, and injection moulding of plastics. Having design, tooling and product manufacture in our own hands enables us to bring fast our clients' new ideas into production.



- In metal products, batches under 200 pieces are manufactured entirely manually.
- When batches vary between 200 to 500 items, we can utilize partial automation.
- Batches over 500 items we can manufacture fully automated, where the machine operator only adds raw-material in the machine.
- In injection moulding of plastic, the maximum weight of a piece is approximately 1.5 kg.
- In steel wire product production, we use nearly 1,000 tons of steel wire per year.
- For clients in furniture industry, we offer product solutions, e.g. for Blum, Grass ja Hettich mechanisms.



coatings and materials



- Our plastic products are made of plastic suitable for recycling. All the plastic from our processes are processed further and utilized as raw material for new plastic products.
- All materials and coating alternatives we use have food-safe approvals, and meet the requirements of the RoHS directive and the REACH Act.
- We manufacture metal and plastic products for companies in custom colours, please ask for availability of your own colour using RAL numbers or a colour model.
- We use chrome powder paint coating for products which do not require abrasion resistance. Chrome powder painting is less damaging to the environment than traditional 3 or 6 chroming.
- We constantly develop product materials, and try to find new more environmentally friendly alternatives. Of the steel wire we use minimum of 70 % is made of recycled material.

PLASTICS:

Various plastic types: ABS, polypropylene (PP), polystyrene (PS), HD polyethylene and LD polyethylene (HDPE, LDPE). The plastic types have been carefully selected according to the purpose of use.

- Colours: red, yellow, blue, birch green, anthracite, white, brown, grey, black.

Plastic colours:



METAL COATING ALTERNATIVES:

Epoxy, or epoxy polyester powder painted surface is thin, hard, and shock-proof. Under the powder paint, a conversion treatment is given on case by case basis to improve corrosion resistance.

- Standard colours: anthracite (new), silver, chrome, black, and white

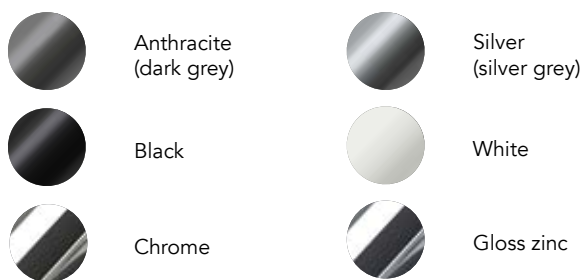
Polyethylene or LD polyethylene coated surface is durable, flexible and very corrosion resistant.

- Standard colours: anthracite (new), silver, white

Special coatings:

- In chroming, we use 3-chrome which contains no chrome acid chemicals. A chromed surface is very corrosion and wear resistant.
- A gloss zinc product is coated with a layer of zinc, and afterwards it is blue passivated. A glossy zinc surface is very corrosion and wear resistant. A lacquer treatment is given to the zinc coated surface, if the product is assumed to be in contact with foodstuffs.

Metal colours:



Due to print technical reasons, colours may vary from the real ones. Due to constant product development we reserve the right to make changes.





Your retailer:

Further product information
www.lankafinland.com



Due to constant product development we reserve the right to make changes. Product colours may vary due to print technical reasons. © Lanka ja Muovi Oy 2/2020



Manufacturer:
Lanka ja Muovi Oy
Niittymäentie 81
28580 Pori
+358, 2,634, 7700.

Follow us:



#lankajamuovi



est. 1955